



# **National Digital Library**

## Enterprise Architecture v3.0

Ministry of Education and Culture  
Ministère de l'Éducation et de la Culture

# NDL: National Digital Library

**The National Digital Library project seeks to promote** the social impact of cultural heritage and library materials in different sectors by developing services and operating models for their creation, management, utilisation and preservation, and by increasing system interoperability and data compatibility.

**The key objective of enterprise architecture work** is to provide sufficient guidance for enabling interoperability between architectures and ensuring the effectiveness of architectural steering.

# NDL Enterprise Architecture: Essential Themes

## Development

- Maintaining and developing the NDL's Digital Preservation (DP) service and Finna public interface
- Identifying developmental requirements for other significant digital services in the library, archive and museum sectors

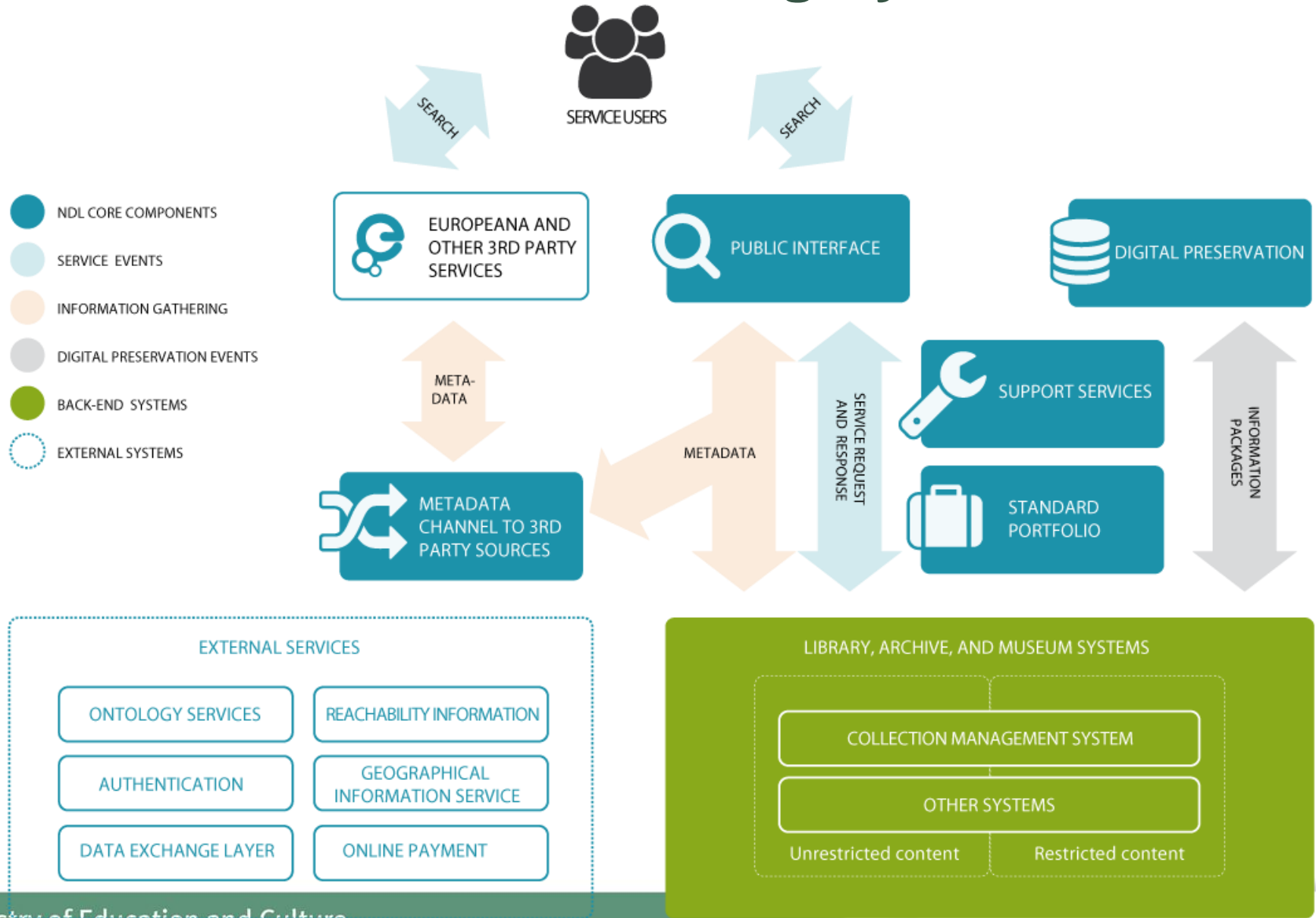
## Interoperability

- Promoting interoperability between IT systems and information architectures in the library, archive and museum sectors by, for example, utilising the National Service Architecture

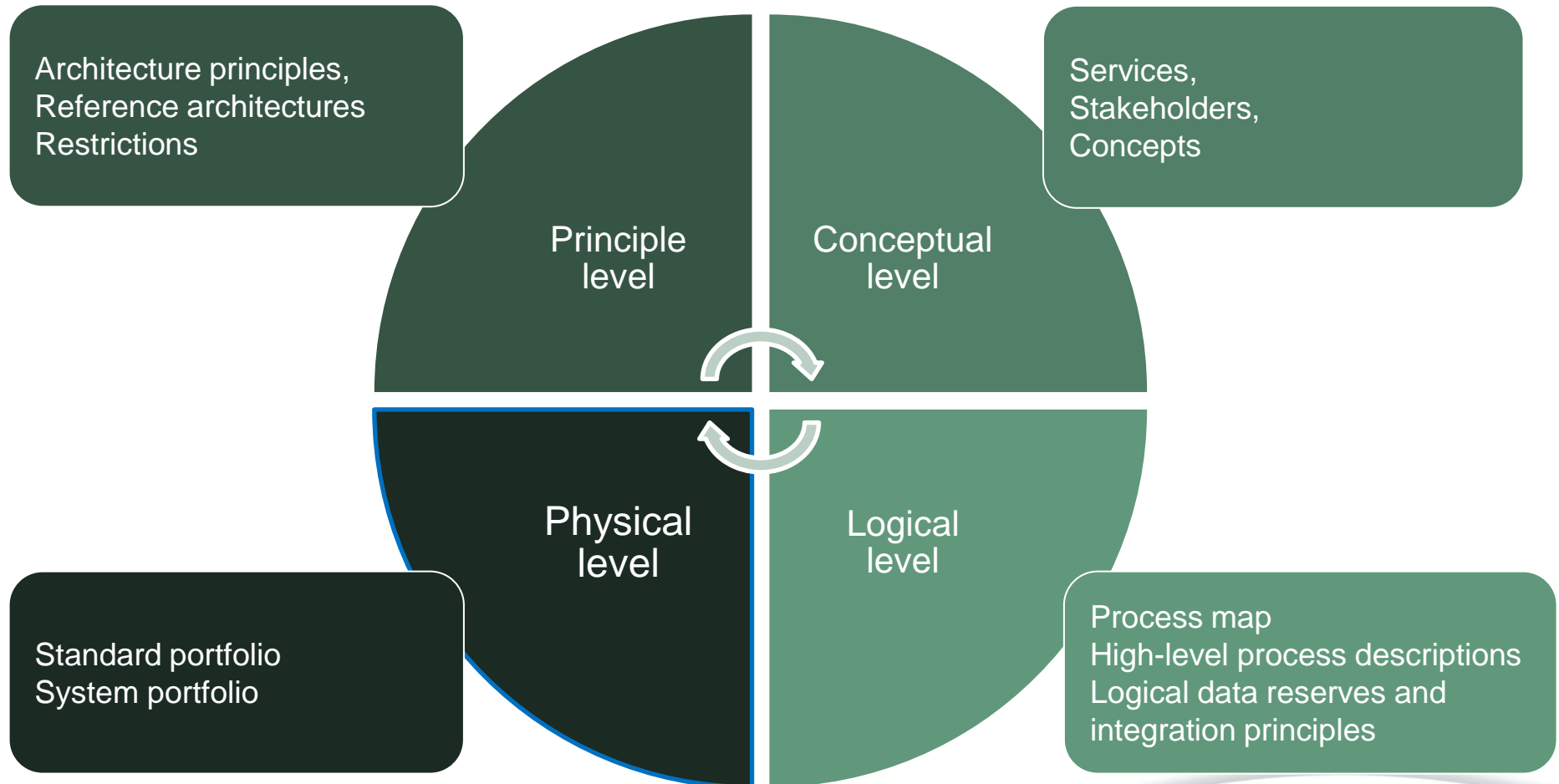
## Activity and know-how

- Developing operating models and tools for the creation, administration, utilisation and preservation of digital cultural heritage reserves, and strengthening expertise in this area.

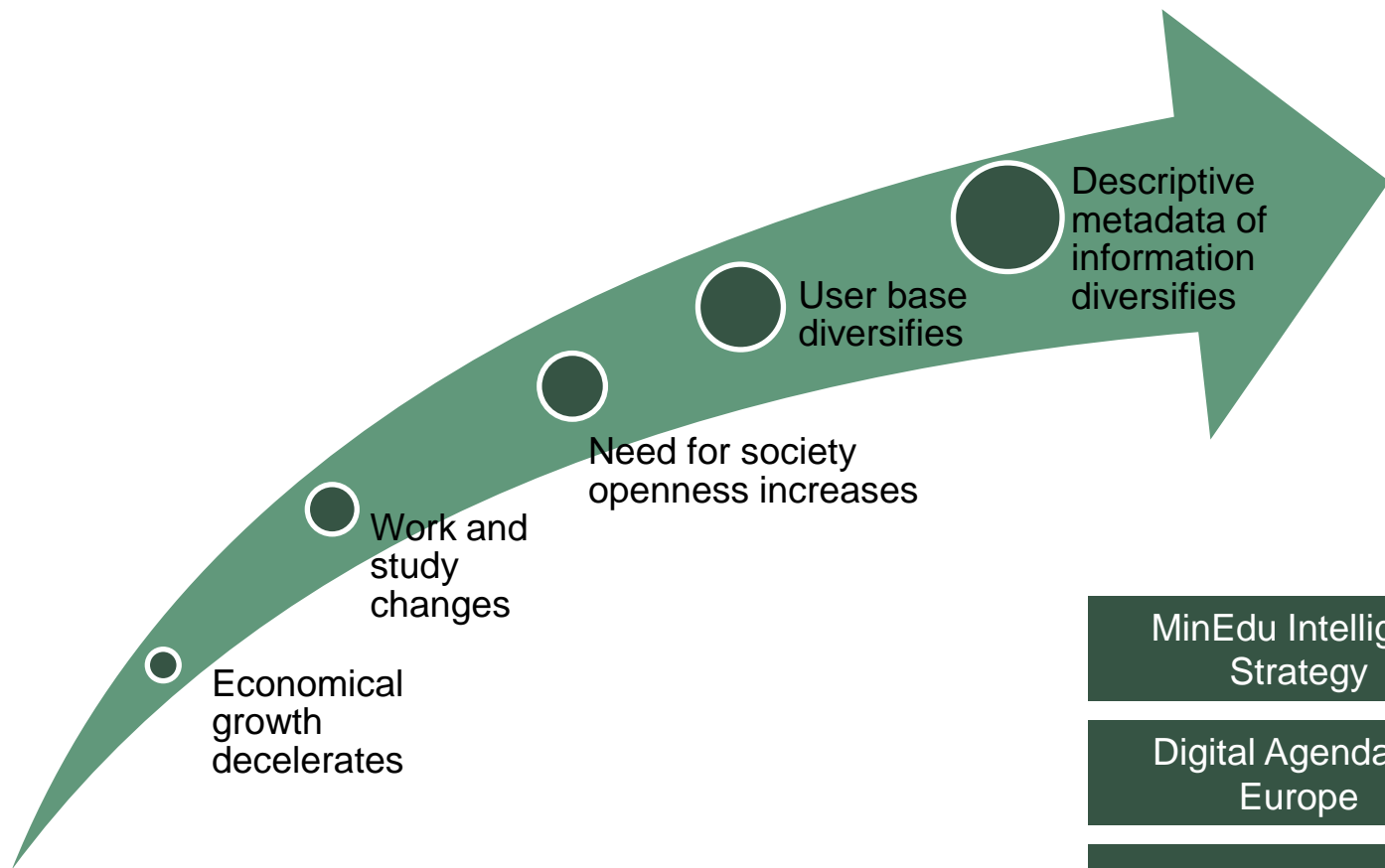
# NDL is a Networking System



# Enterprise Architecture Structure



# Principle Level: NDL and Changing Environment



Strategic programme of government

Implementation plan for the Government's key projects and reforms

MinEdu strategy 2020

Strategy for Cultural Policy

Finna-strategy

Audiovisual Culture in the Digital Era

Information society development in education 2020

Finland's Cyber Security Strategy

Renewing Finland 2015-2020

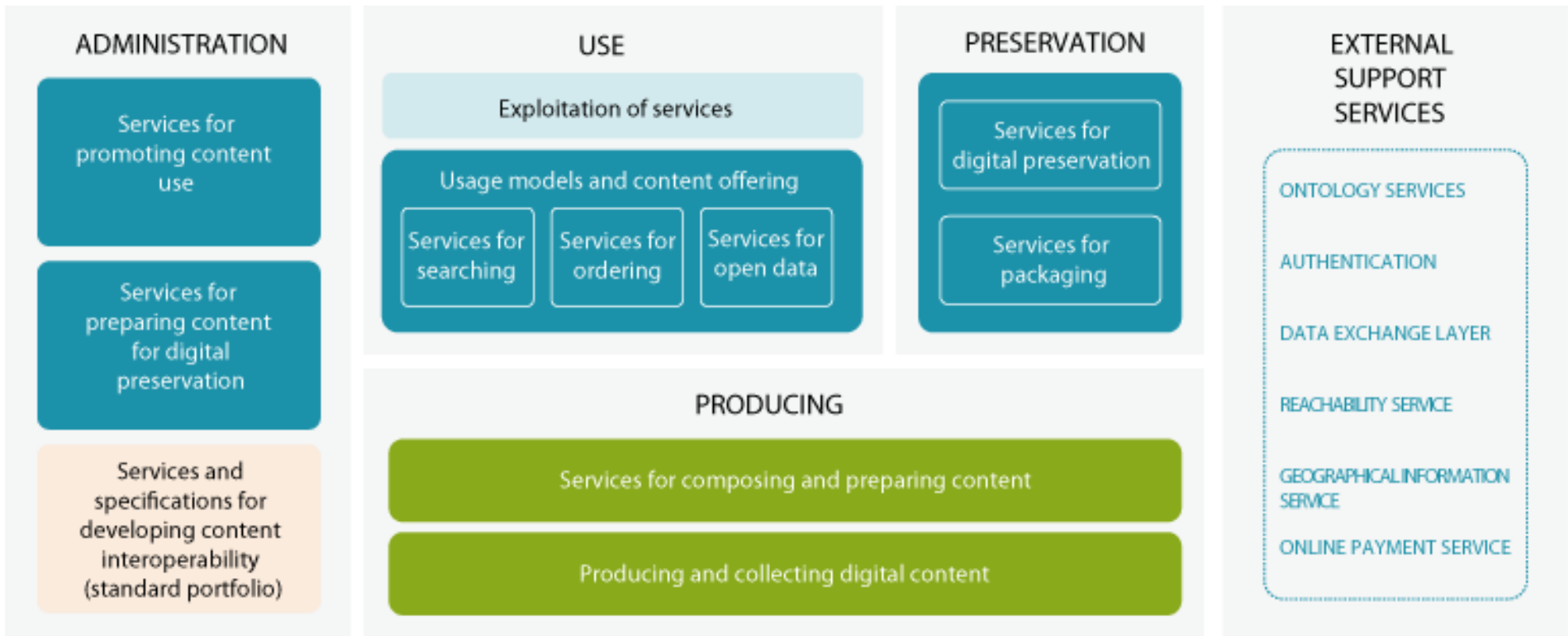
MinEdu Intelligent Strategy

Digital Agenda for Europe

Finna-strategy

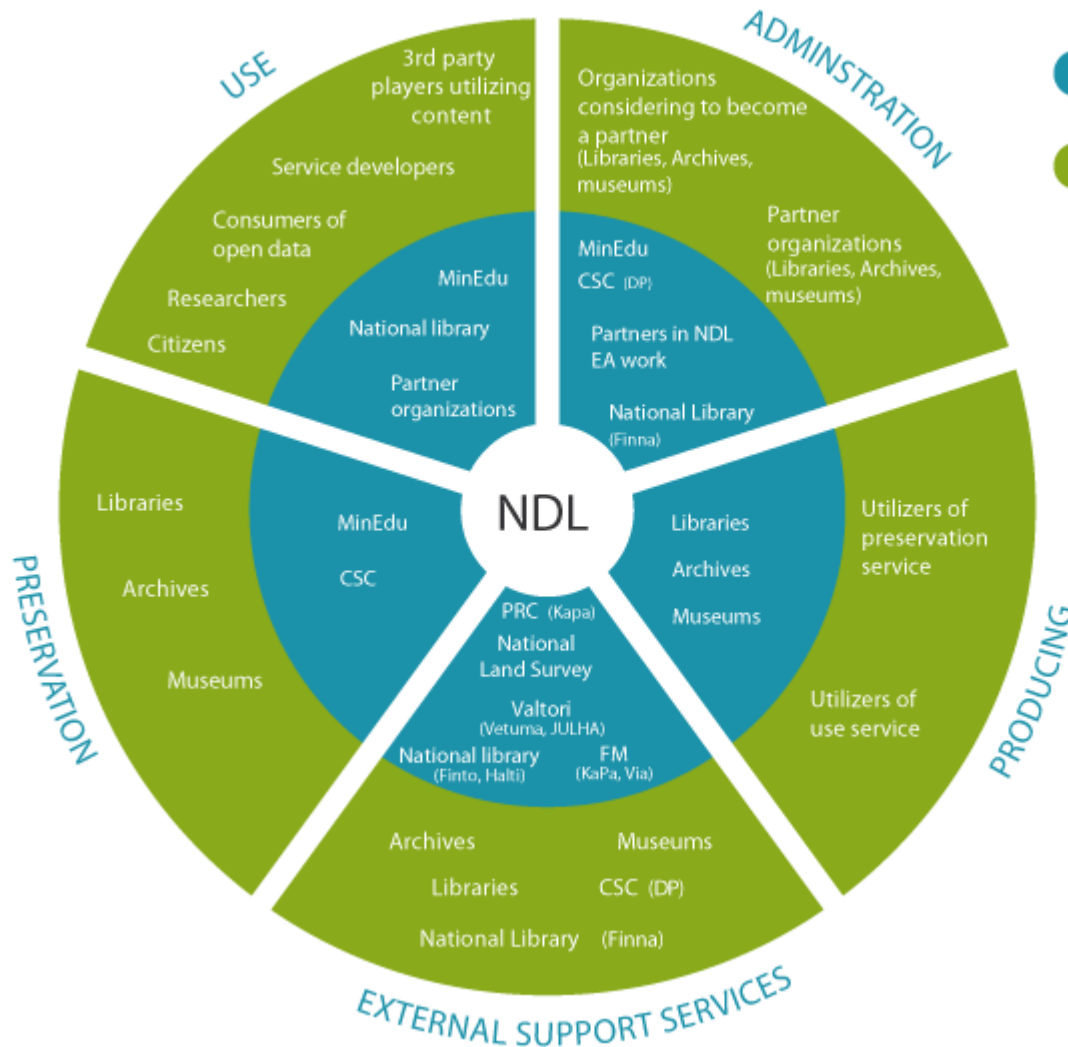
ATT-roadmap

# Conceptual Level: Services Offered by NDL



● ND (Service providers and owners)     
 ● Partner organization     
 ● Client     
 ● Partner organization and ND

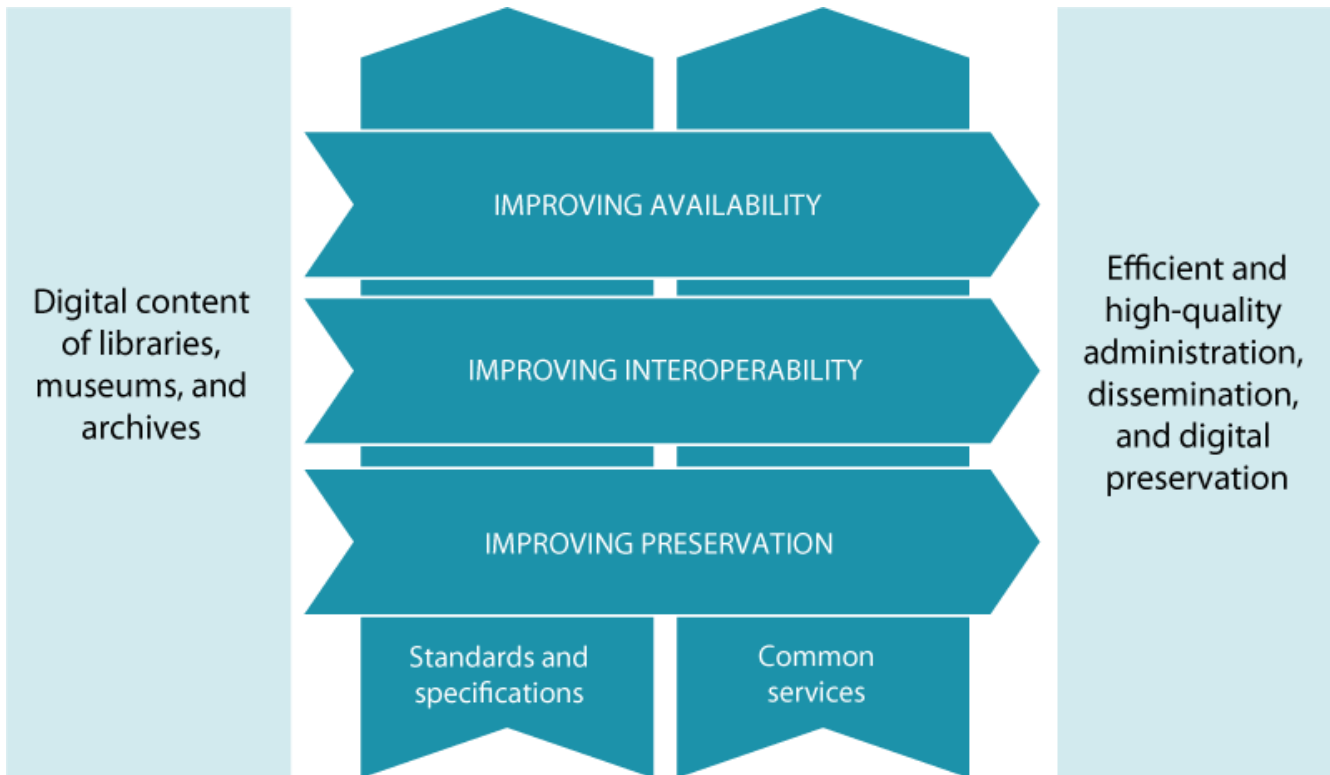
# Conceptual Level: Stakeholders



- **Enabler** is either producer, provider or administrator of a service group
- **Utilizer** is a service user of services belonging to a service group
- **Partner organisation** can be either library, archive or museum sector actor, which can utilise the use or preservation service groups



# Logical Level: NDL Core Processes



**The NDL's process objective** is to provide digital cultural heritage content in a manner and format that enables digital data reserves for culture and science to be efficiently and effectively utilized.

Focal areas:

- Content management,
- dissemination and
- digital preservation.

# Logical Level: Core Data Reserves

## Content

- Digital content, to be provided via KDK for efficient utilisation

## Descriptive metadata

- Descriptive metadata for digital content

## Administrative and technical metadata

- Metadata for improving content administration, processing and joint use

## Metadata for customers and end-users

- Metadata, which can be used to optimise user experience of offered services to customers and end-users

## Data reserves for access rights

- Access rights data reserves related to digital content

## Data reserves for service requests

- Data reserves for service requests targeted at digital content

# Physical Level

- The physical level description combines specifications and design to provide a description of the actual concrete implementation.
- At this stage, no attempt has been made to describe the implementation of the NDL's enterprise architecture at a physical level – only the system portfolio has been described at a physical level.